



Innovative participatory approach for Polycentric Sustainable Urban Mobility Plan (SUMP for Polycentric regions)

SUMP conference
Sopot, 12-13 June 2014
Silvia Gaggi, ISIS

Contract Number IEE/11/057/SI2.615924
April 14th 2012 - October 14th 2014

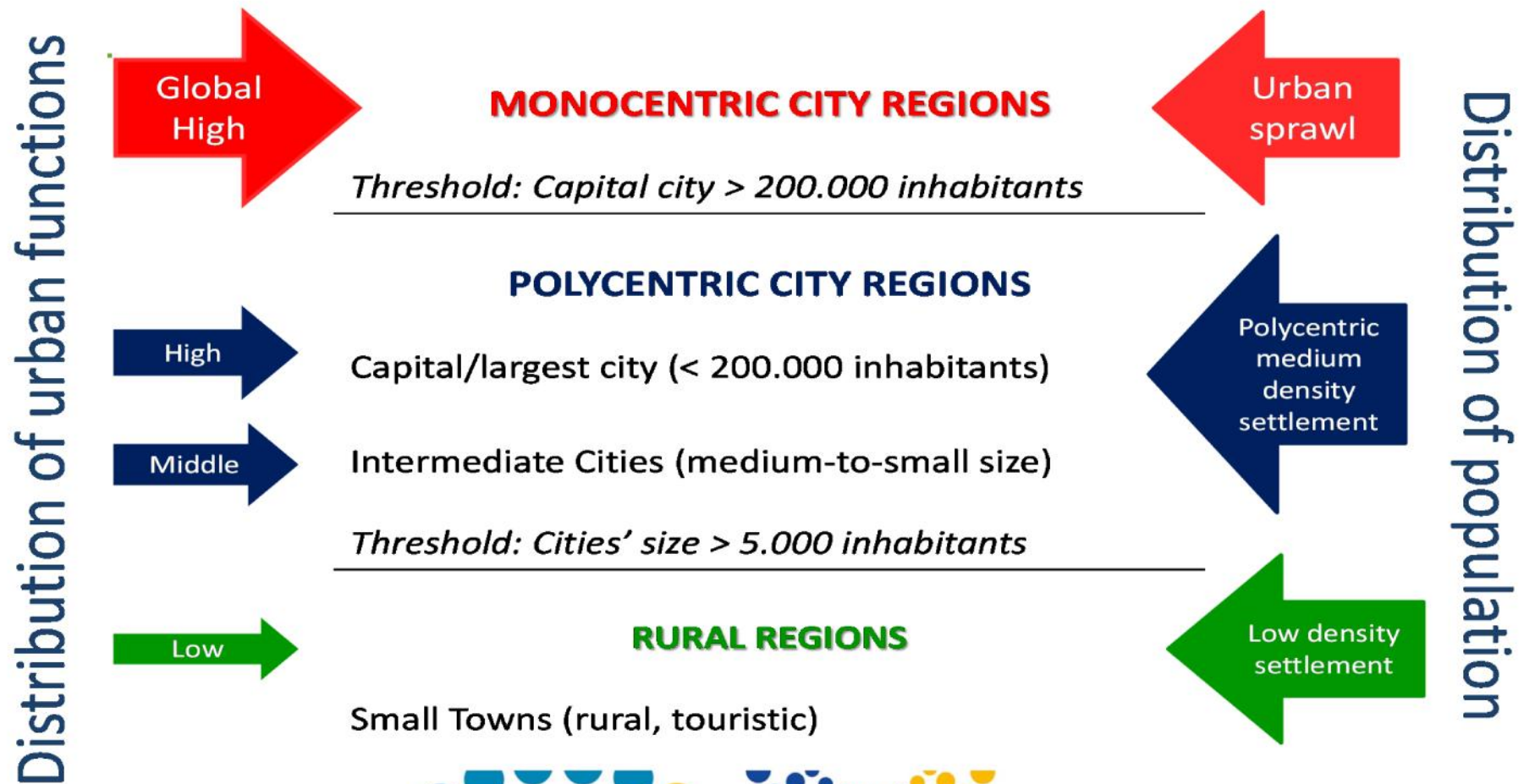
www.poly-sump.eu



This project is funded by the
Intelligent Energy – Europe
programme.



A NEGLECTED REALITY: POLYCENTRIC CITY REGIONS





Why the Poly-SUMP approach?

- **Polycentric city regions** are featured today by a strong dependency on individual car use
- Polycentric city regions are still a **neglected reality** for urban transport planning (mostly undertaken at the city level or for large metropolitan agglomerations, but hardly for city networks)
- They need more **polycentric planning and foresight**, taking a holistic (whole area), multi-governance (all governments) and multi-stakeholders (all players) approach.



Six polycentric regions in Europe

Marche Region (Italy)

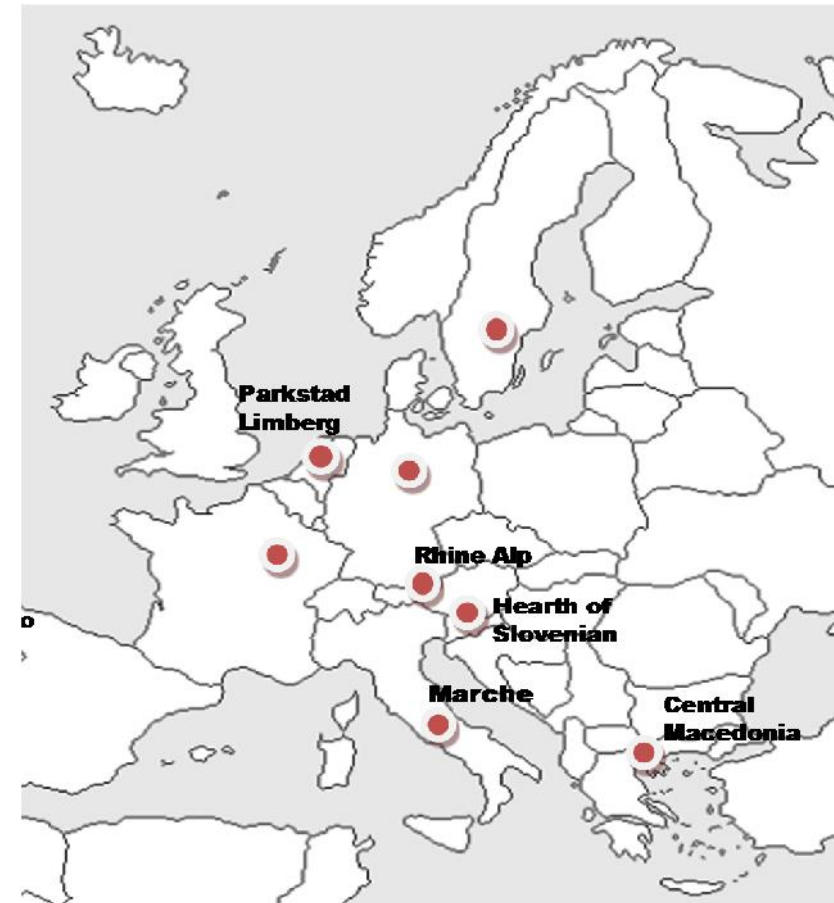
Central Alentejo (Portugal)

Hearth of Slovenia

Central Macedonia (Greece)

Rhine Alps (Austria)

Parkstad Lindburg (Netherlands)

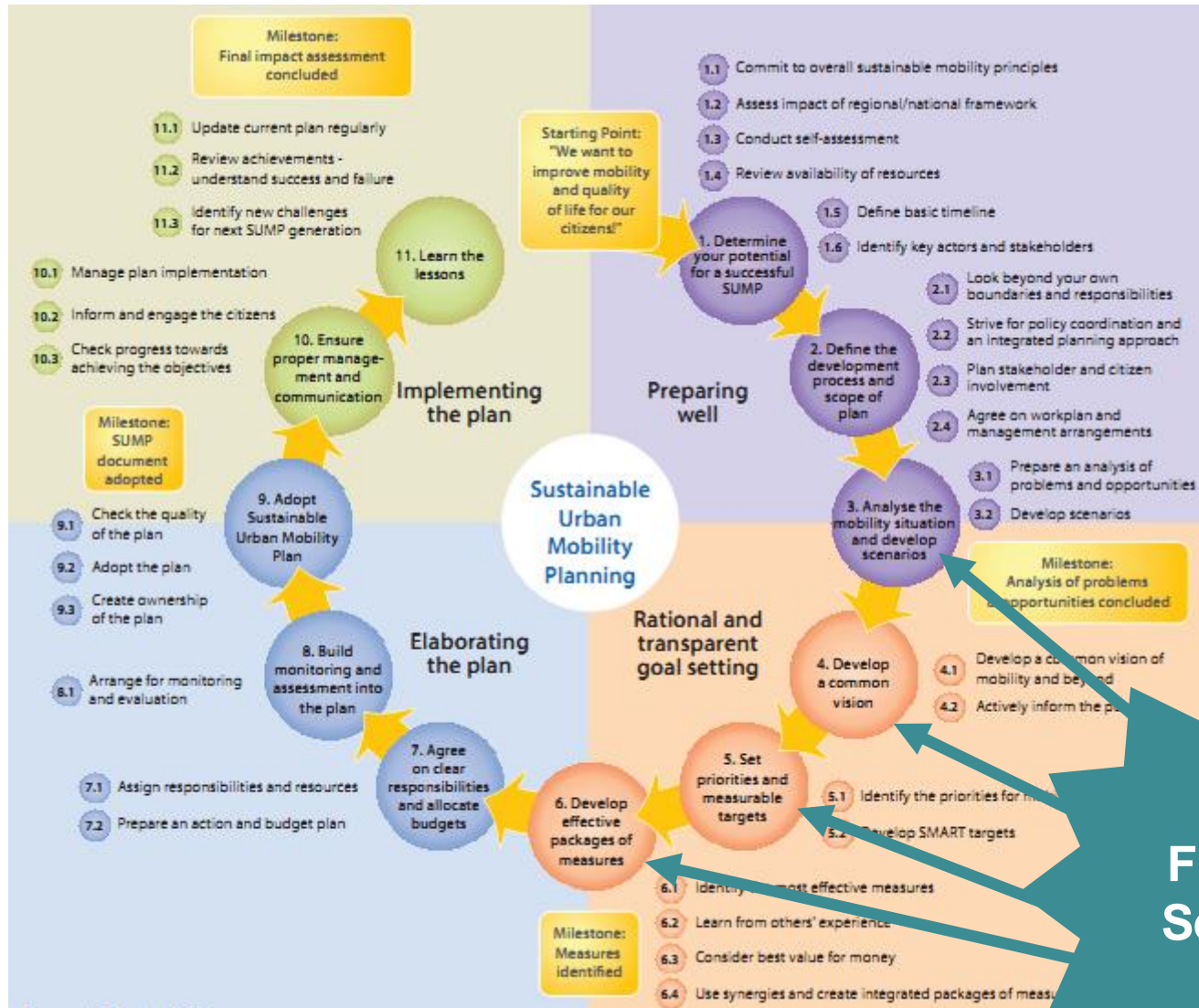




The Poly-SUMP project aims

- ❑ To test Future Search as a participatory transport planning and foresight tool in six polycentric regions of Europe
- ❑ To draw lessons for transferability
- ❑ To develop Policy Guidelines to support polycentric mobility planning and foresight across Europe





Future Search

The Future Search

The Future Search Workshop (FSW) has historically two independent sources.

- The one was the German Zukunftswerkstatt (“**Workshop of the Future**”), originally created and engineered at the beginning of the 80’s in order to allow ordinary citizens to participate in urban planning to achieve a “democratization from below” from such processes.
- The other source is the North-American **Future Search Conference**, developed at the beginning of the 90’s and aiming at accompanying organisation in the search of a common ground on which building a better future. By the beginning of the new century, the two models merged to give birth to the **Future Search Workshop**



Future Search is a **learning laboratory** for “getting everybody involved in improving the whole system”. It is typically a **three days** meeting gathering **60 to 100** people who share a common purpose. Future Search enables organisations and communities to learn more together than any one person can discover alone. By bringing the “whole system in the room”, all participants are faced with the complexity and uncertainty of the situation, and can take more informed and clear

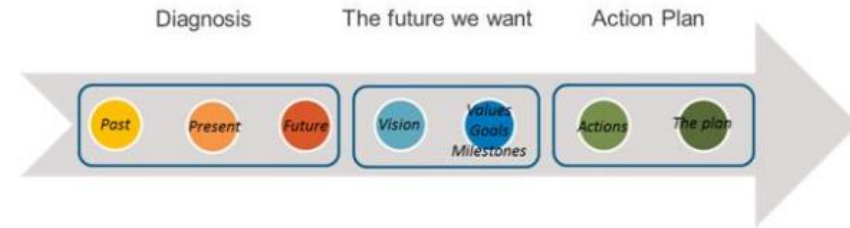
Benefits for poly-centric regions

To create a **shared vision and action plan** for an organisation, network, or community;

- To enable all stakeholders to act on common ground and **take responsibility** for their own plans;
- To help people **implement an existing vision** that they have not acted on together.

This helps to extend traditional processes of change and organisational/policy development in new directions.



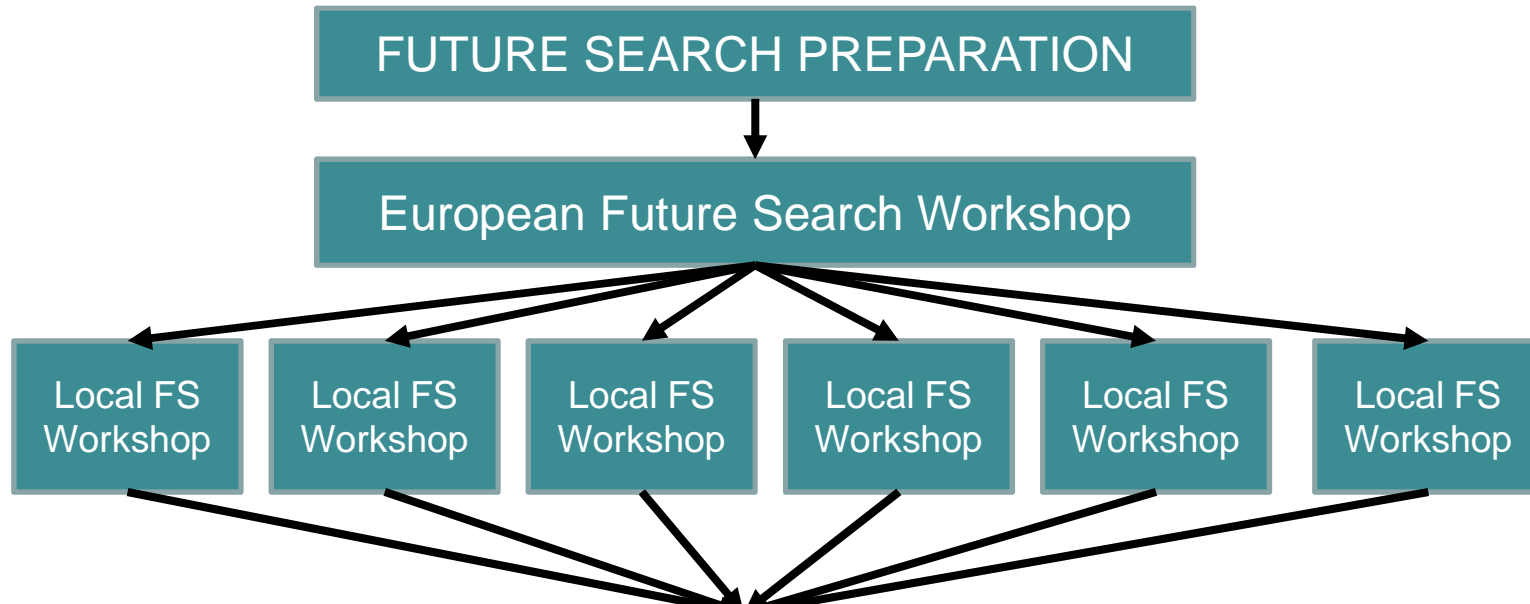


The FSW typically articulated in **three stages**:

Shared diagnosis: during this step, participants analyse the current situation of the topic of the conference (for Poly-SUMP, mobility): they reflect on the past evolutions of their environment, trying to find out what they have in common and what makes them different. They then work on the same way on the present situation. They finally explore the structural trends that are going to influence their field of action in the future.

The future we want: during this step, participants have the opportunity to develop visions of a utopian and perfect future, without any obligation to be realistic. They share this vision with the other participants and develop scenario i.e. stories depicting how this utopian situation was reached. All participants then define their common ground and shared principles of actions to reach this desired future. They also write their differences and dissensions down.

Building an Action Plan: during this third step, participants focus on the formulation of concrete projects and actions based on the visions previously developed. They work with the help of structured guidelines (name of the action, stakeholders, goals, finances, needs, risks and chances, etc.)

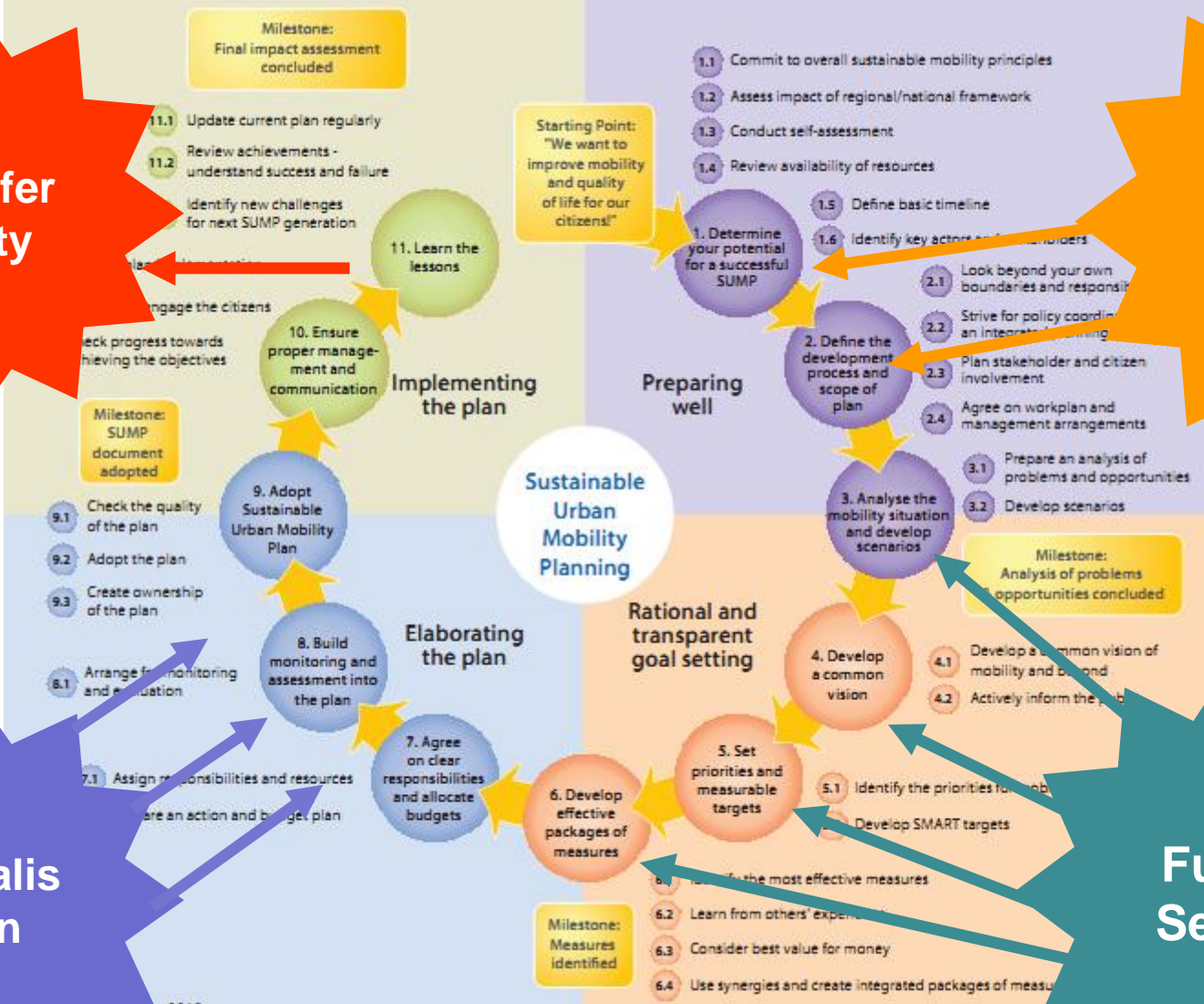


- *Abruzzo Region (Italy)*
- *Norte Alentejo (Portugal)*
- *Obersteiermark-West (Austria)*
- *Maribor (Slovenia)*
- *Eastern Macedonia and Thrace (Greece)*
- *Northen Limburgh (The Netherlands)*
- *Botnian Arc Region (Municipalities of Lulea, Piteå, Kalix, Älvsbyn and Boden) in Sweden*

FOLLOW-UP
(FACTS FINDINGS+VISIONS+PLATFORM OF STAKEHOLDERS)

TRANSFERABILITY

**POLY-SUMP
GUIDELINES**



Transferability

Facts findings

Capitalisation

Future Search



Poly-SUMP - What's been done so far

- Comparative analysis of polycentric regions (spatial & mobility features; institutional and planning frameworks)
- European Future Search Workshop
- Local Future Search Workshops
- On going evaluation of the FS test (preparation, execution, outcomes and follow-up)
- Follow-up and capitalization of the Future Search outcomes in the polycentric regions

Main next actions

- Check transferability to twinned regions
- Guidelines to apply the methodology for sustainable mobility planning in polycentric regions of Europe
- Dissemination and communication





Expected results

- Improve cooperation among actors and develop shared visions and action plans for sustainable mobility within and between the cities of the polycentric regions
- Adoption of new policies and/or innovative solutions for polycentric regions
- Transfer the Poly-SUMP methodology to other regions (twinned polycentric regions).
- Develop and disseminate Poly-SUMP Guidelines.



Thank you!



Silvia Gaggi – sgaggi@isis-it.com