

Evaluation of 2 years regional co-operation centre for sustainable transport

Magdalena Nilsson
Hållbar Mobilitet Skåne
(Sustainable Mobility in Skåne)





Vision

It is easy to choose the most sustainable journey and transportation in Skåne.



A regional center for sustainable transports

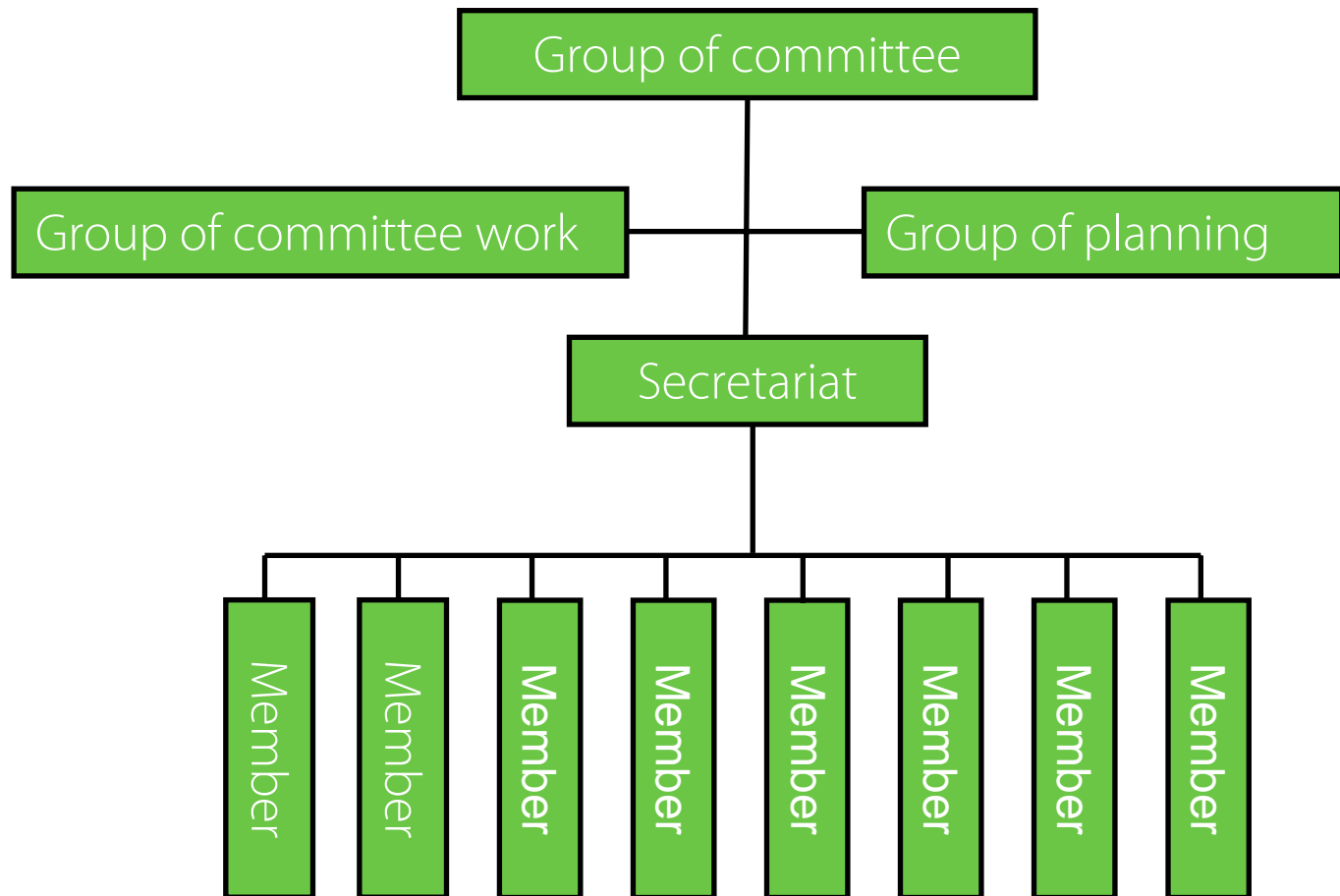
Funded by ...



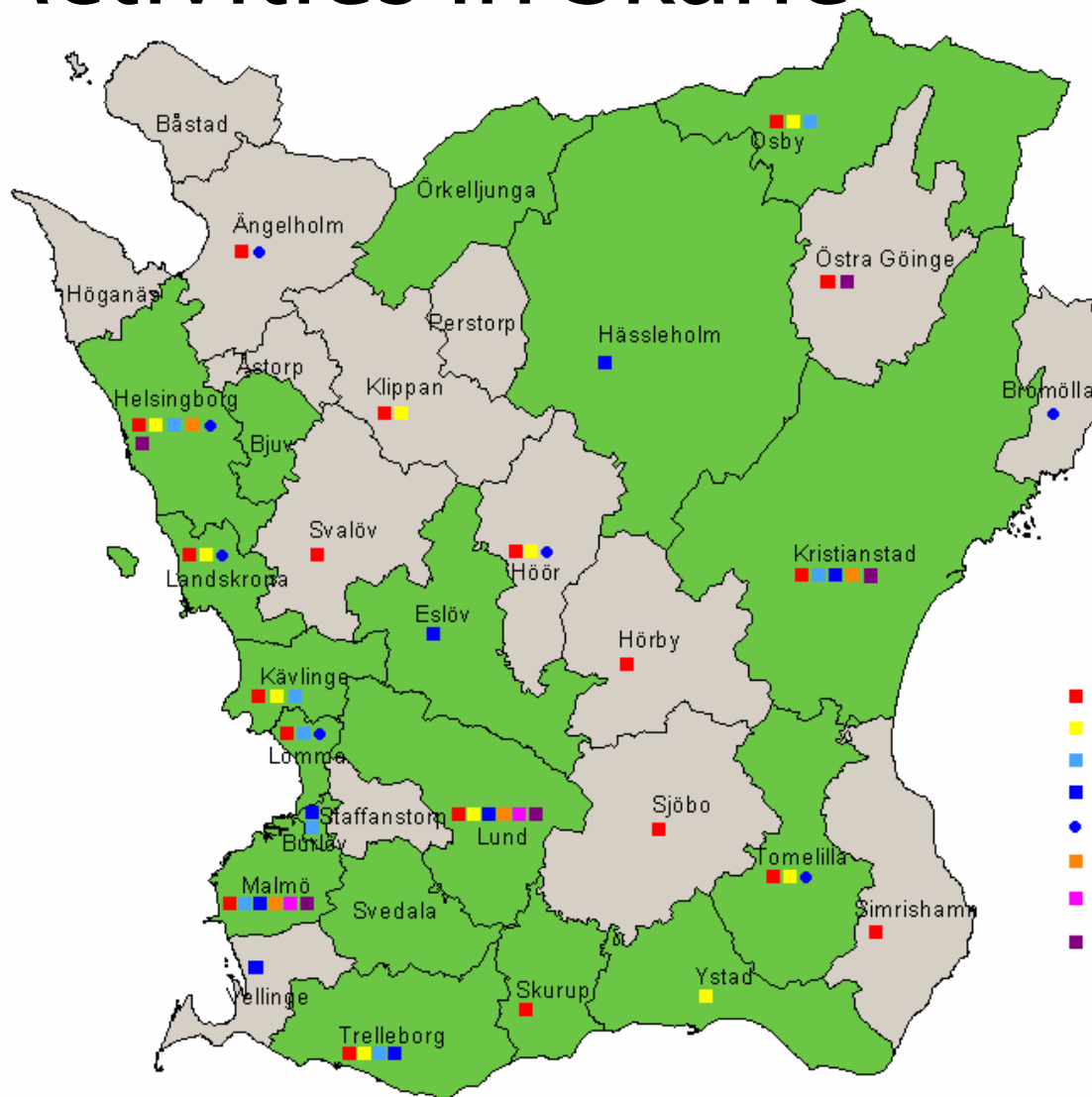
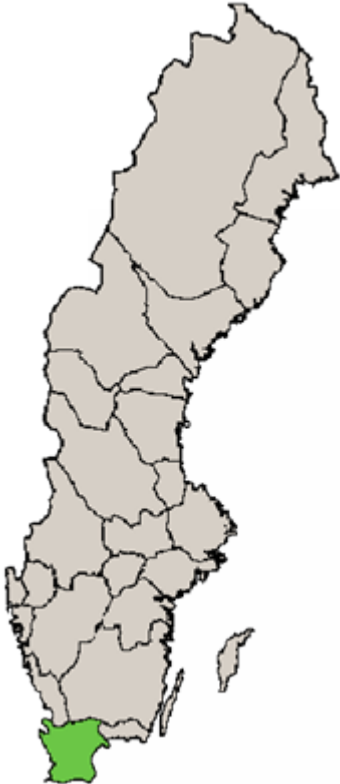
En investering för framtiden



Organisation



Activities in Skåne



- Inköpspolicy
- Handhavande
- MM Smörgåsbord
- Skånetrampar
- Skånetrampar - endast cykling
- Bilpoolsforum
- Tillhåll - del 1
- Tillhåll - del 2



Evaluated by SUMO

(System for Evaluation of Mobility Projects)

- Services
 - Home page
 - News letters
 - Forum for consultation
 - Projects
- Option offered
 - Member ship
 - Meeting places (seminars, workshops, study tours)
 - Participation in projects
- Effects
 - Change in travel behaviour/mode of transportation
 - Carbon dioxide reduction

Evaluation

Project: Purchase policy for vehicles

	Level	Today	
Background	External factors	Recession Cars offered in the market The price on petrol, ethanol and biogas/natural gas	
	Person-related factors	Political climate in the municipalities	
	Level	Objective	Indicators
Services	Useful activities	<ol style="list-style-type: none"> 1. Phonecontact with all municipalities i Skåne (33) 2. Gather facts from the municipalities 3. Workshops 4. Consultant support 5. Contact 	<ol style="list-style-type: none"> 1. All municipalities in Skåne has been contacted 2. Information about the municipalities car holding are gathered 3. 2 workshops has been arranged 4. A consultant has been involved in the process 5. The municipalities have been in contact with a consultant and HMSkåne employees
	Awareness of mobility services	100 percent of the municipalities are invited to join the project	All 33 municipalities has been invited to take part of the project
	Usage of mobility services	<ol style="list-style-type: none"> 1. 30 percent of the municipalities participate in the project 2. 80 percent of the participants accept the policy 3. 50 percent of the participated municipalities purchase or lease cars that use 1 dl (0.33 fluid ounces) less fuel per 10 km (6.2 miles)than earlier or choose clean vehicles. 	<ol style="list-style-type: none"> 1. 55 percent of the municipalities participate in the project 2. 28 percent (44 percent) of the participants accept the policy 3. No valid information available yet.
	Satisfaction with the mobility services	<ol style="list-style-type: none"> 1. 80 percent satisfaction with the workshops 2. 70 percent satisfaction with the product (purshase policy) 3. 50 percent satisfaction with the support offered during the process 	<ol style="list-style-type: none"> 1. 100 percent satisfaction with the workshops (3,9, 12/18) 2. 100 percent satisfacrion with the product (4,2, 15/18) 3. 100 percent satisfaction with the process (4,1, 14/18)

Evaluation

Project: Purchase policy for vehicles

Option offered	Acceptance of the option offered	1. At least 10 municipalities from Skåne join the project 2. At least 8 municipalities accept the policy	1. 18 municipalities joined the project 2. 5 municipalities (8) has accept the policy
	Experimental "individual" behaviour	At least 4 municipalities will purchase more fuel efficient cars or clean vehicles by the end of 2008.	3 municipalities purchase clean vehicles. More to come...
	Satisfaction with the option offered	60 percent of the participated municipalities are satisfied with the purchases made after the purchase policy is accepted.	No valid information available yet.
Effects	Permanent individual behaviour	30 percent buy more efficient cars or clean vehicles	No valid information available yet
	System impact	1.Reduced carbo dioxide emissions 2.More fuel efficient cars and clean vehicles in the second hand market	No valid information available yet

Contact – hmskane.se

Magdalena Nilsson

magdalena.nilsson@hmskane.se

+46 44 309 34 55

Jonas Hedlund

jonas.hedlund@hmskane.se

+46 44 309 32 89

Britt Carlsson-Green

britt.carlsson-green@hmskane.se

+46 44 309 39 27

